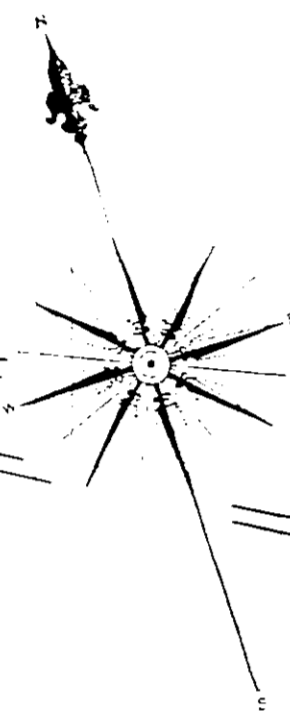
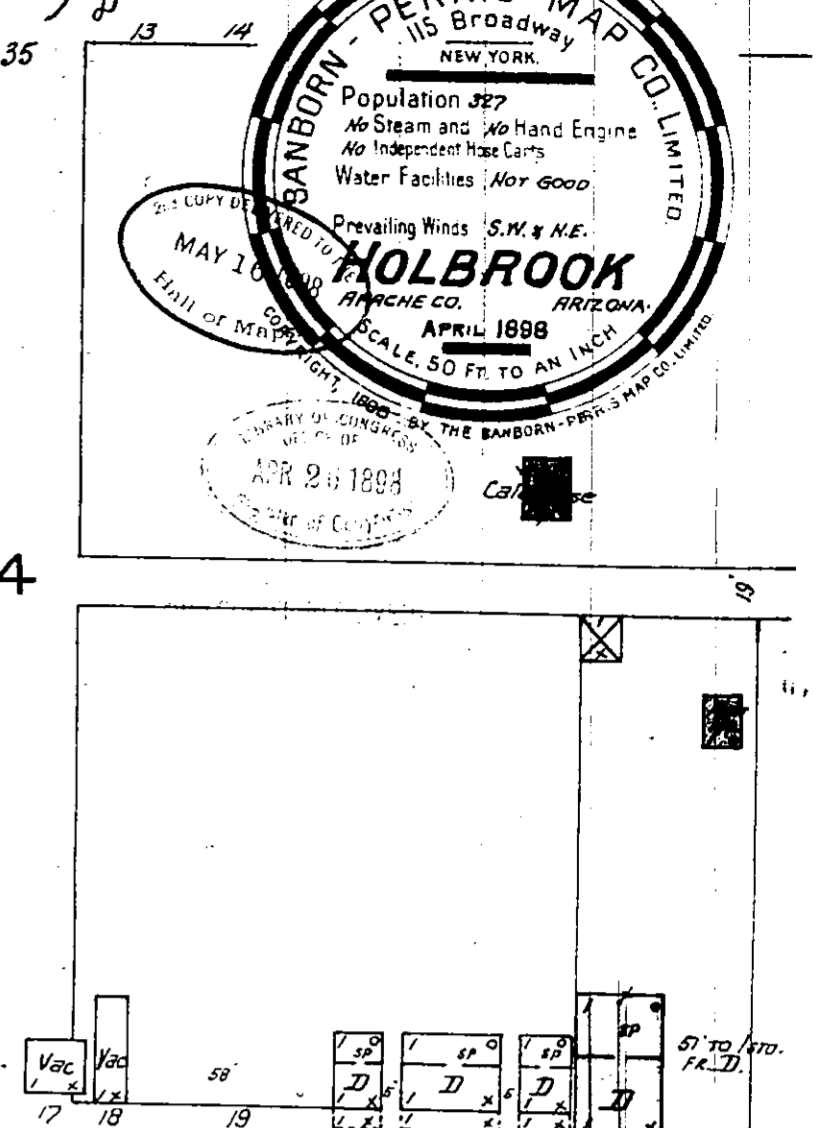
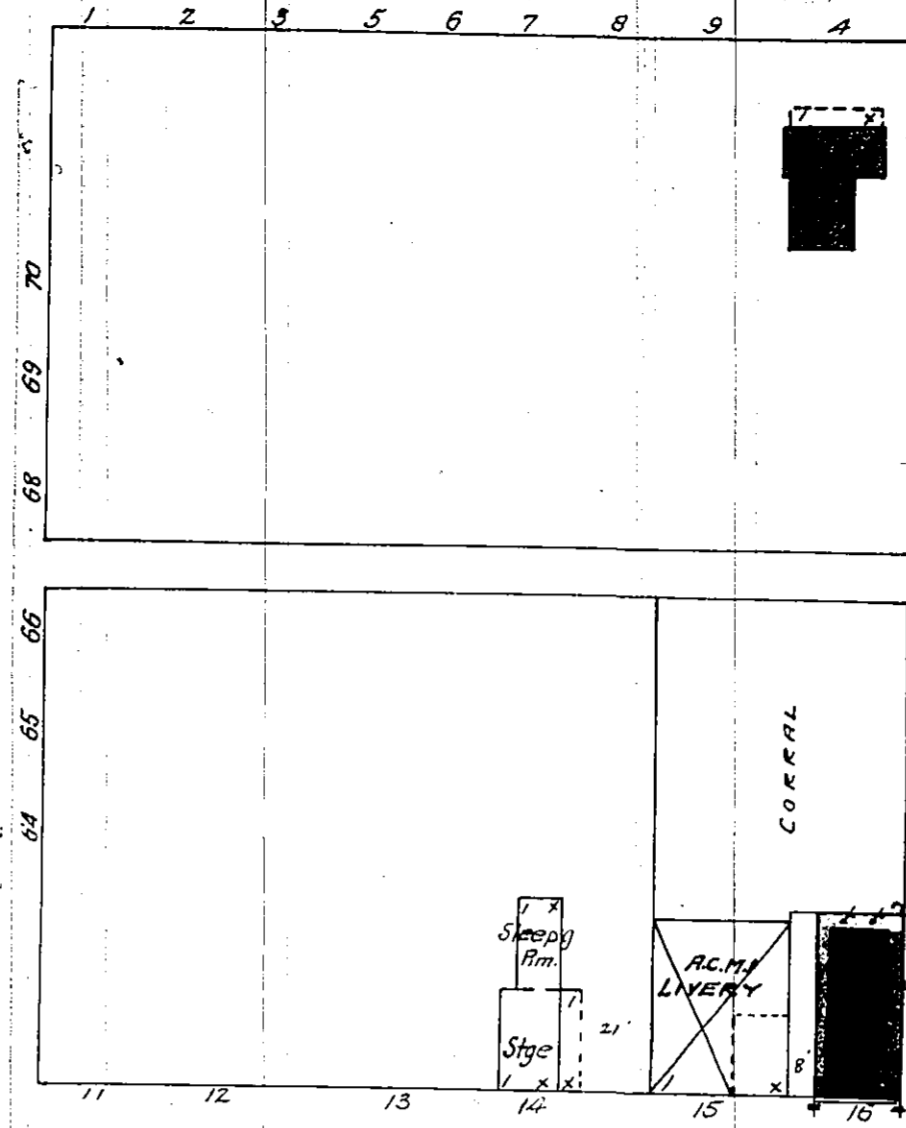
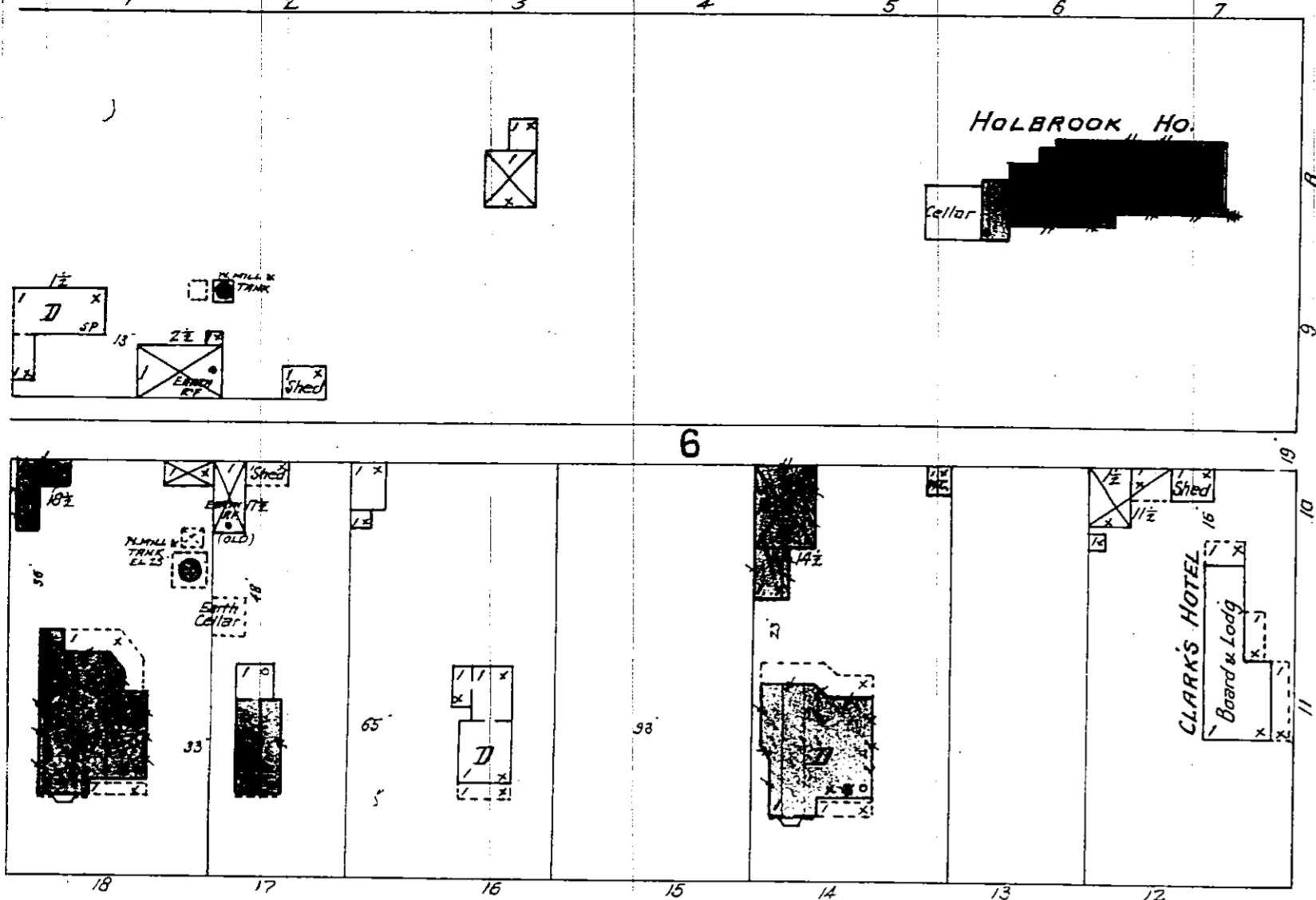
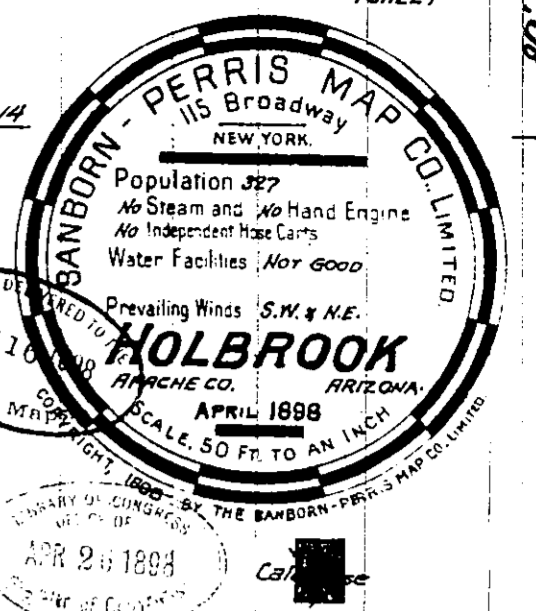


OAKLAND

AV.

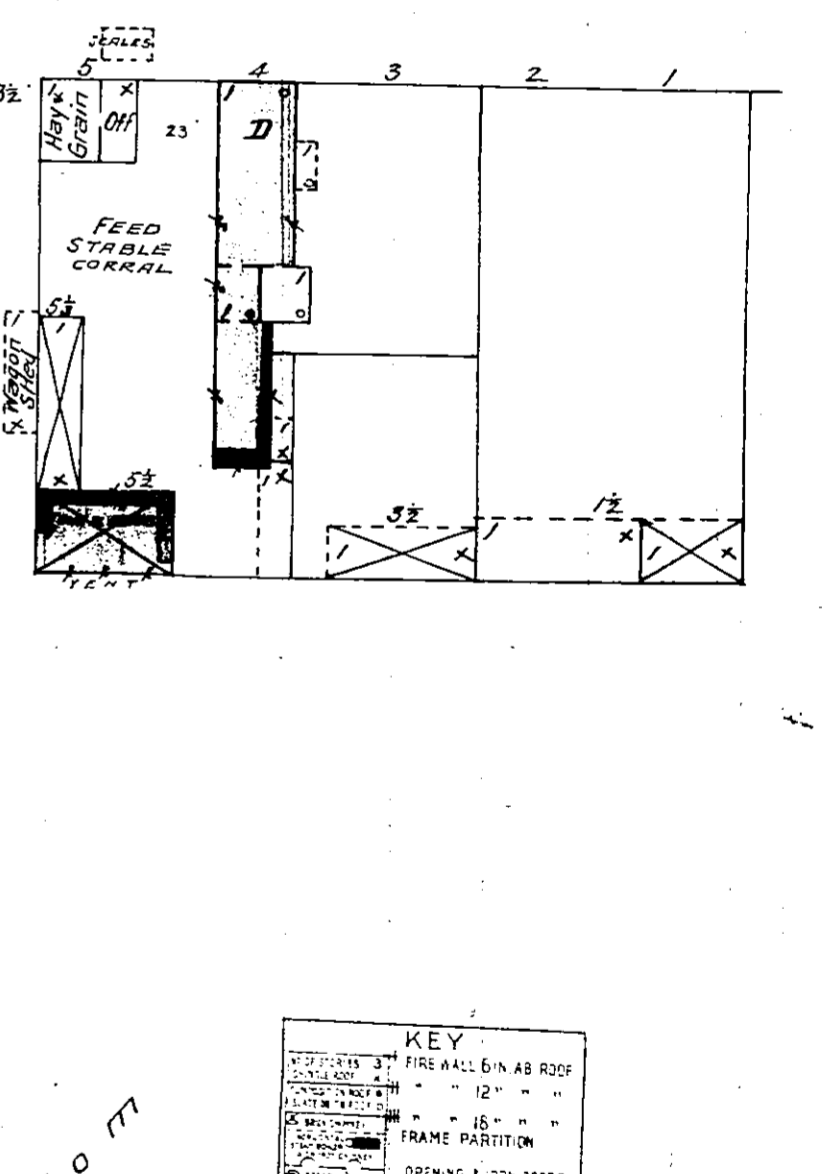
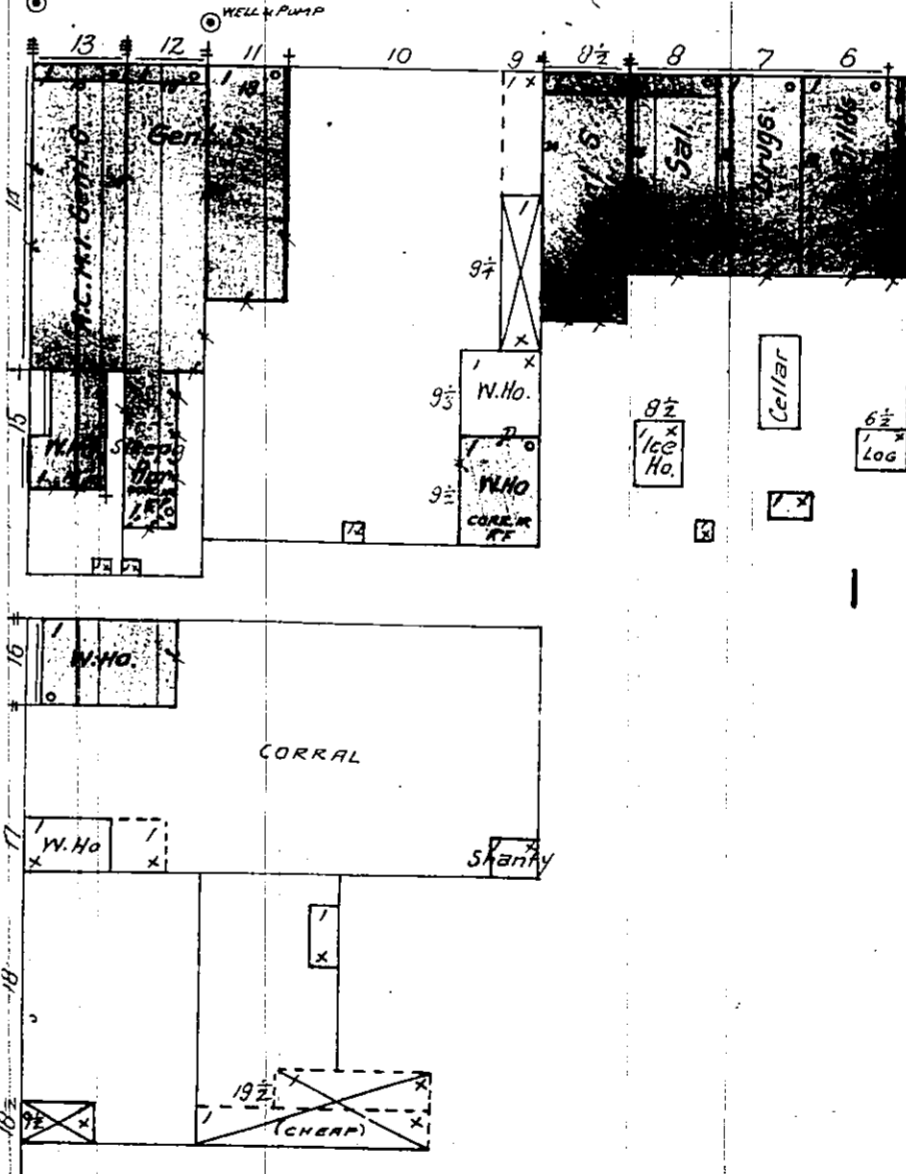
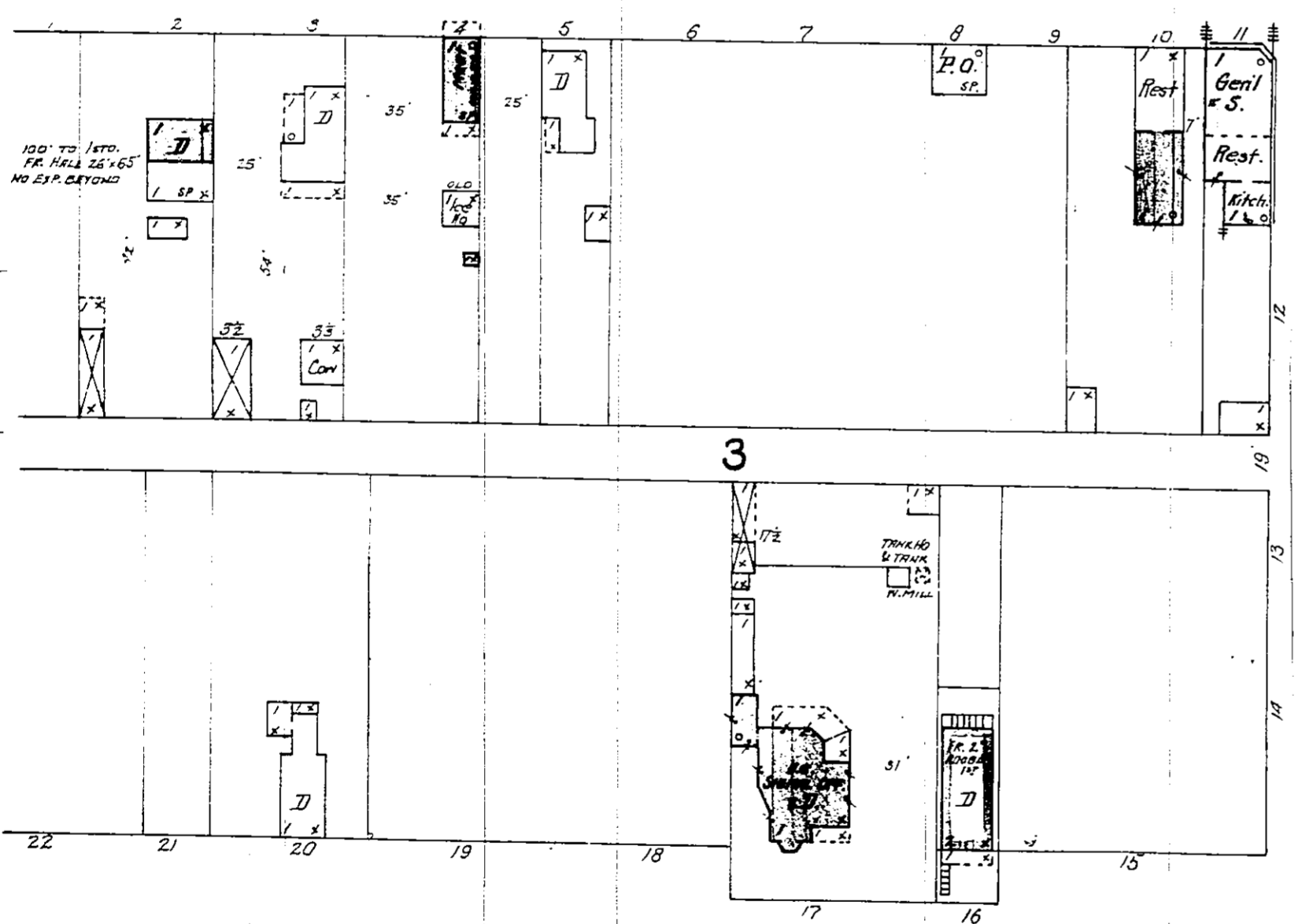
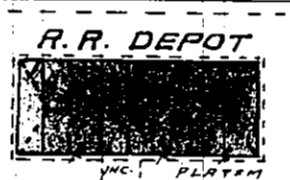
COURT HOUSE TO BE BUILT IN 29 BLOCK NORTH.  
BUILDING TO BE COMPLETED FALL 1898.  
NO EXPOSURES AROUND.

1898  
26079



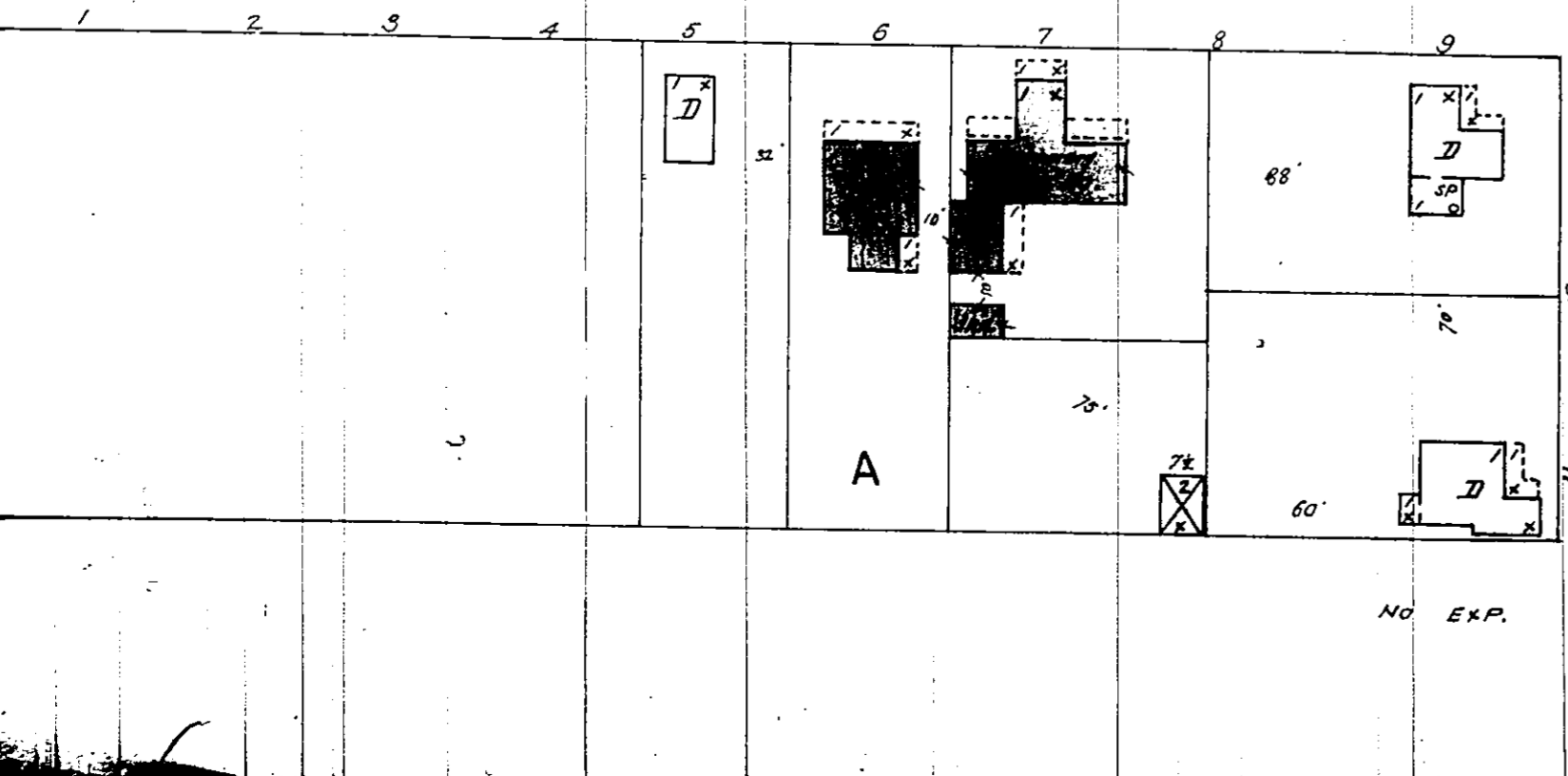
CENTRAL

AV.



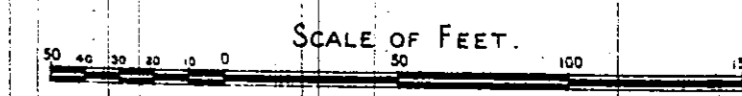
WASHINGTON

AV.



KEY

---	FIRE WALL
---	12" - 12" -
---	15" - 15" -
---	FRAME PARTITION
---	OPENING & IRON DOORS
---	WINDOWS - SHUTTERS
---	STABLE
---	WINDOW IN 1 <sup>st</sup> STORY
---	2 <sup>nd</sup> - 2 <sup>nd</sup> -
---	2 <sup>nd</sup> - 2 <sup>nd</sup> -
---	BLDG. COLORED YELLOW ARE FRAME
---	RED - BRICK
---	BLUE - STONE
---	GREY - IRON
---	GREEN - HEADS
---	BROWN - SPECIALS
---	GREEN - SPECIALS
---	INDICATE RELATIVE HEIGHTS
---	TO THROUGH ONLY
---	SP. ST. PIPE
---	PAVE DRIVE
---	5 <sup>th</sup> - 5 <sup>th</sup> -
---	ALTERNATE STREET NOS ARE ACTUAL
---	CONSECUTIVE
---	BROWN LINE NEAR BLDG. COLORED
---	SOLID
---	METAL



Bottom  
River