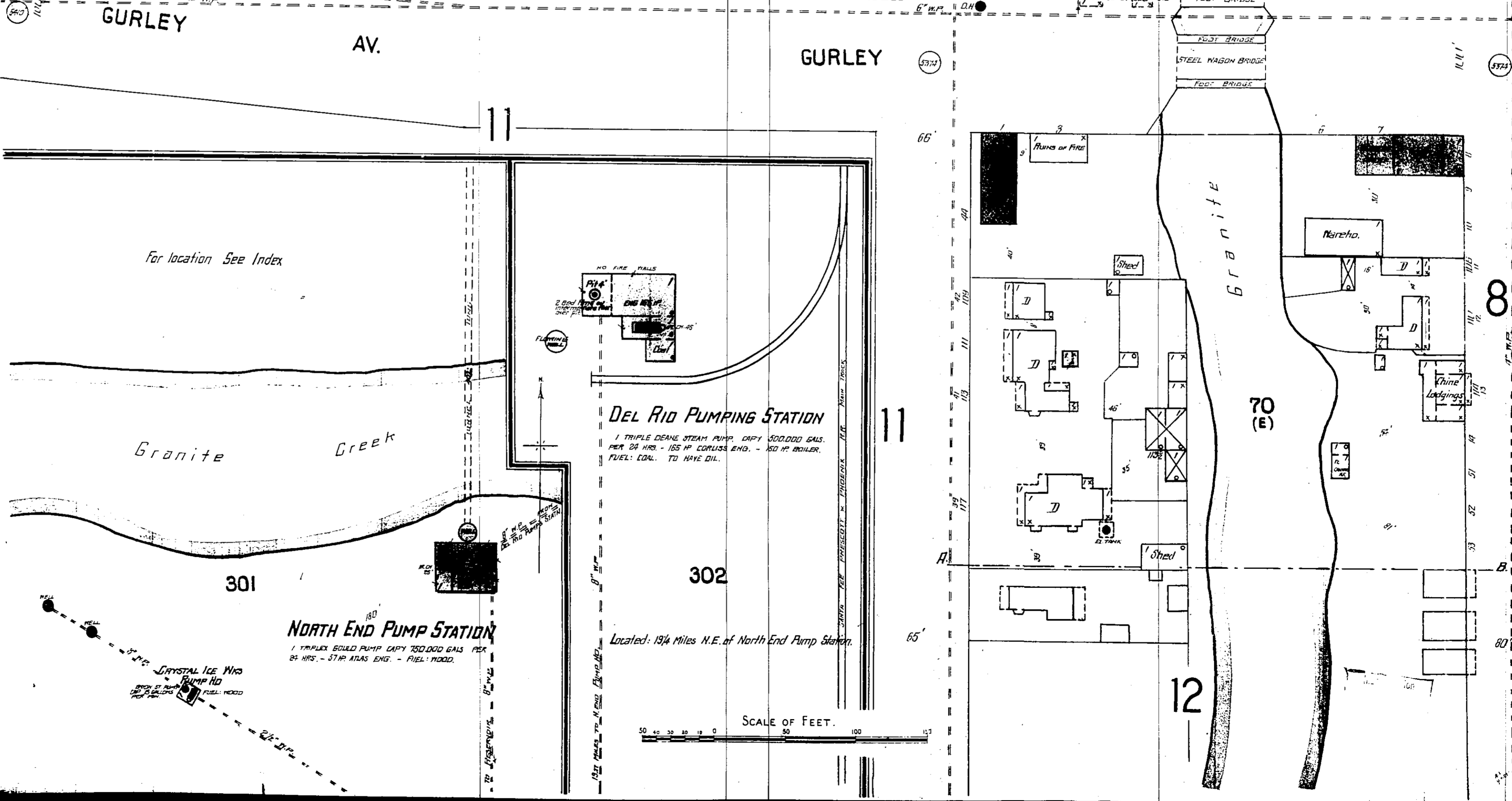
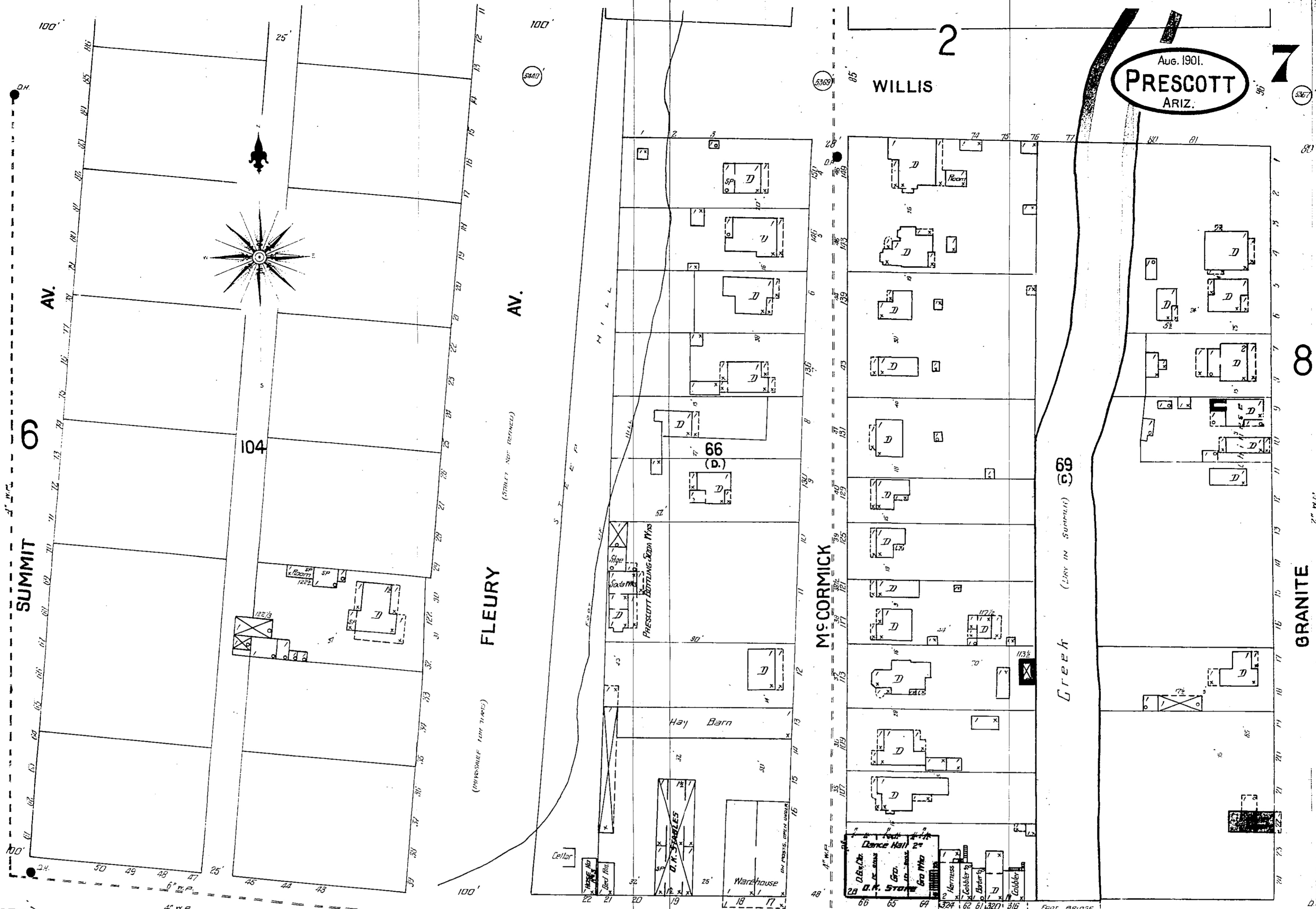


Aug. 1901.
PRESCOTT
ARIZ.

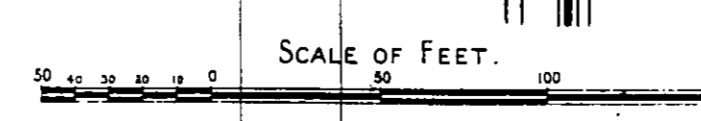


DEL RIO PUMPING STATION

1 TRIPLE DEANE STEAM PUMP, CAPY 300,000 GALS. PER 24 HRS. - 165 HP CORUSS. ENG. - 150 HP BOILER. FUEL: COAL. TO HAVE OIL.

NORTH END PUMP STATION

1 TRIPLEX GEORGE PUMP CAPY 750,000 GALS. PER 24 HRS. - 57 HP ATLAS ENG. - FUEL: WOOD.



Located: 1 3/4 Miles N.E. of North End Pump Station.

For location See Index

Granite Creek

CRYSTAL ICE MFG. PUMP HO. FUEL WOOD