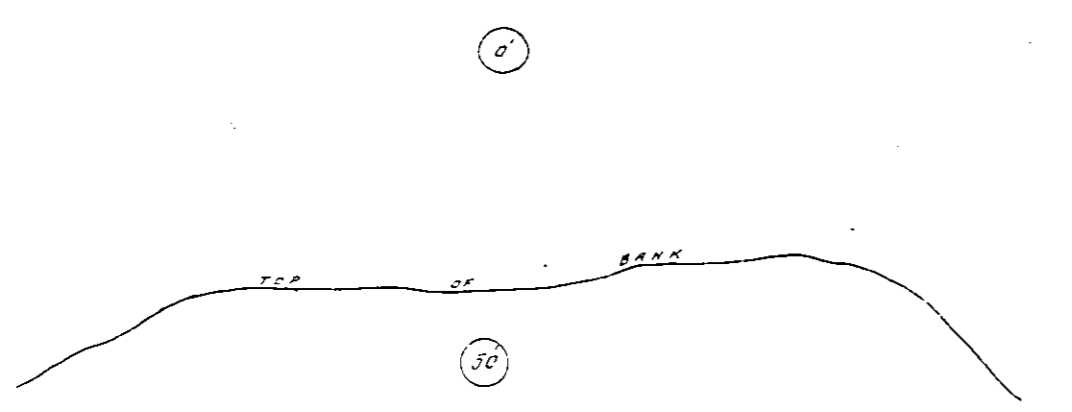


MAY 1904  
TOMBSTONE  
ARIZ.

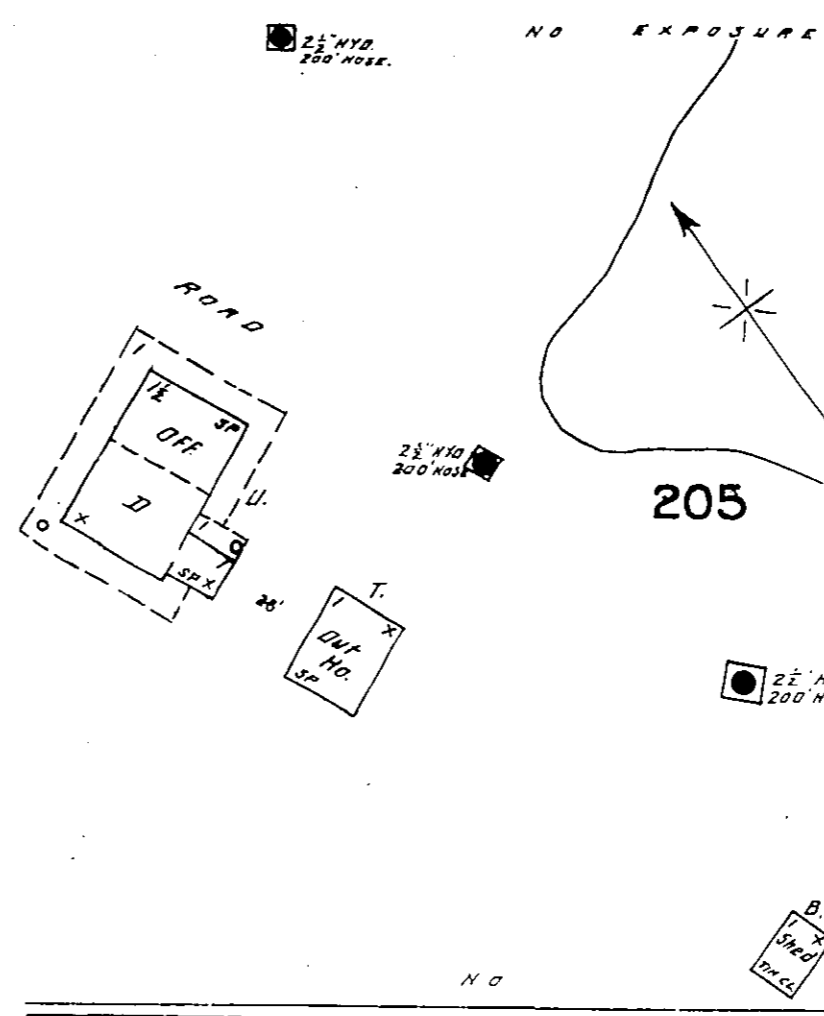
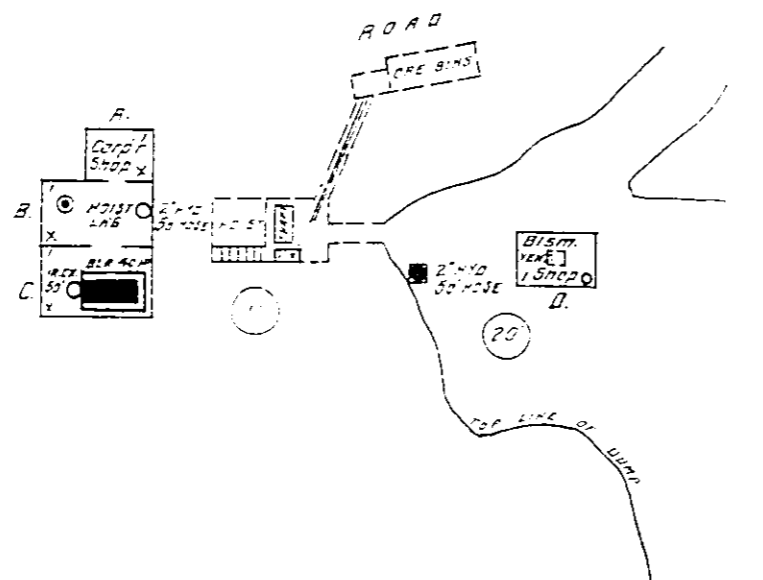


201

TOMBSTONE CONSOLIDATED MINES CO. L.D.

SILVER THREAD HOIST  
FUEL: COAL - LIGHTS: COAL OIL.

Located 1/2 Mile S.E. of Court Ho.

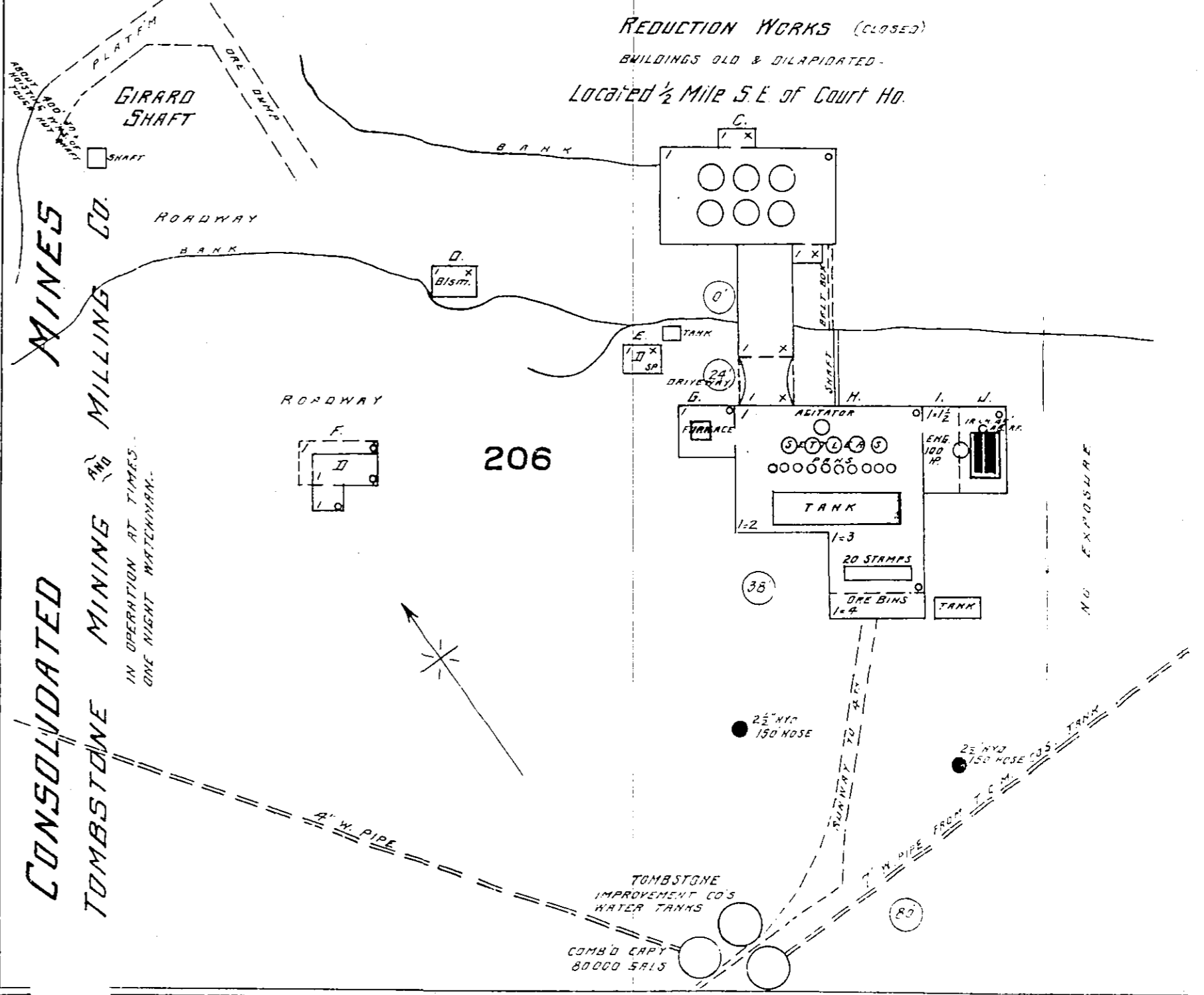


205

TOUGH NUT SHAFT  
FUEL: WOOD - 600' 2 1/2" HOSE  
30' 1" NOSE IN BOILER HO.

Located 1/2 Mile S.E. of Court Ho.

CO. L.D.

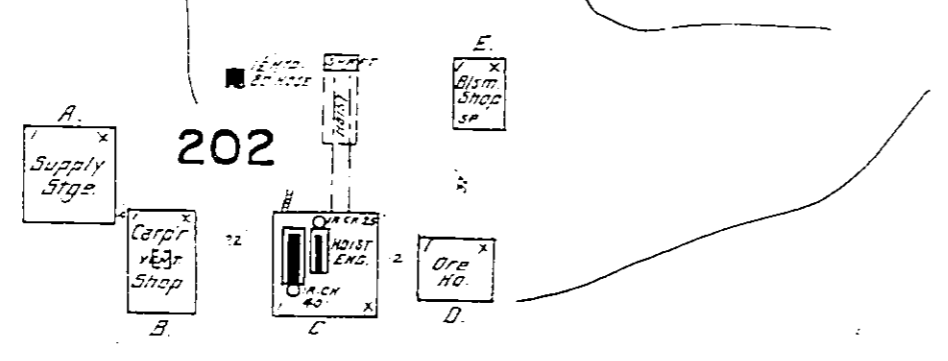


206

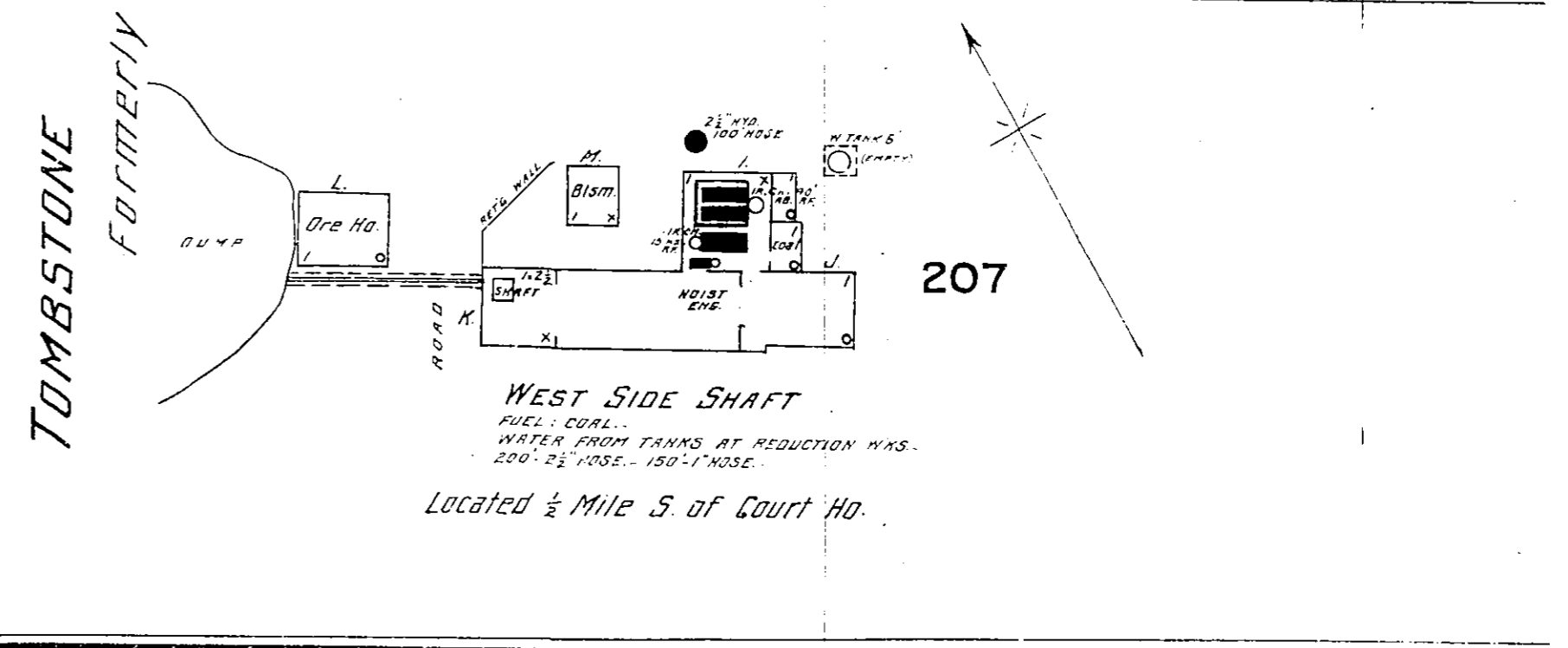
REDUCTION WORKS (CLOSED)  
BUILDINGS OLD & DILAPIDATED.  
Located 1/2 Mile S.E. of Court Ho.

TOMBSTONE CONSOLIDATED MINES CO. L.D.

TRANQUILLITY HOIST  
FUEL: COAL - NO LIGHTS.  
Located 1/2 Mile S.E. of Court Ho.



202

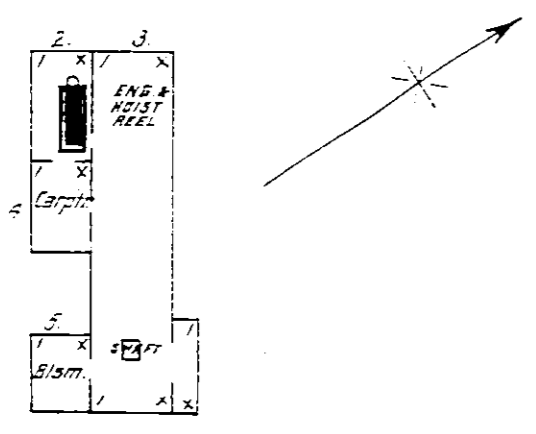


207

WEST SIDE SHAFT  
FUEL: COAL - WATER FROM TANKS AT REDUCTION WKS.  
200' 2 1/2' HOSE - 150' 1" NOSE.  
Located 1/2 Mile S. of Court Ho.

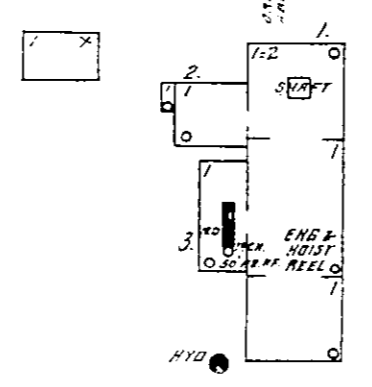
TOMBSTONE FORMERLY

OLD GUARD MINING CO. L.D.  
HOIST  
Located 3/4 Mile S. of Town.

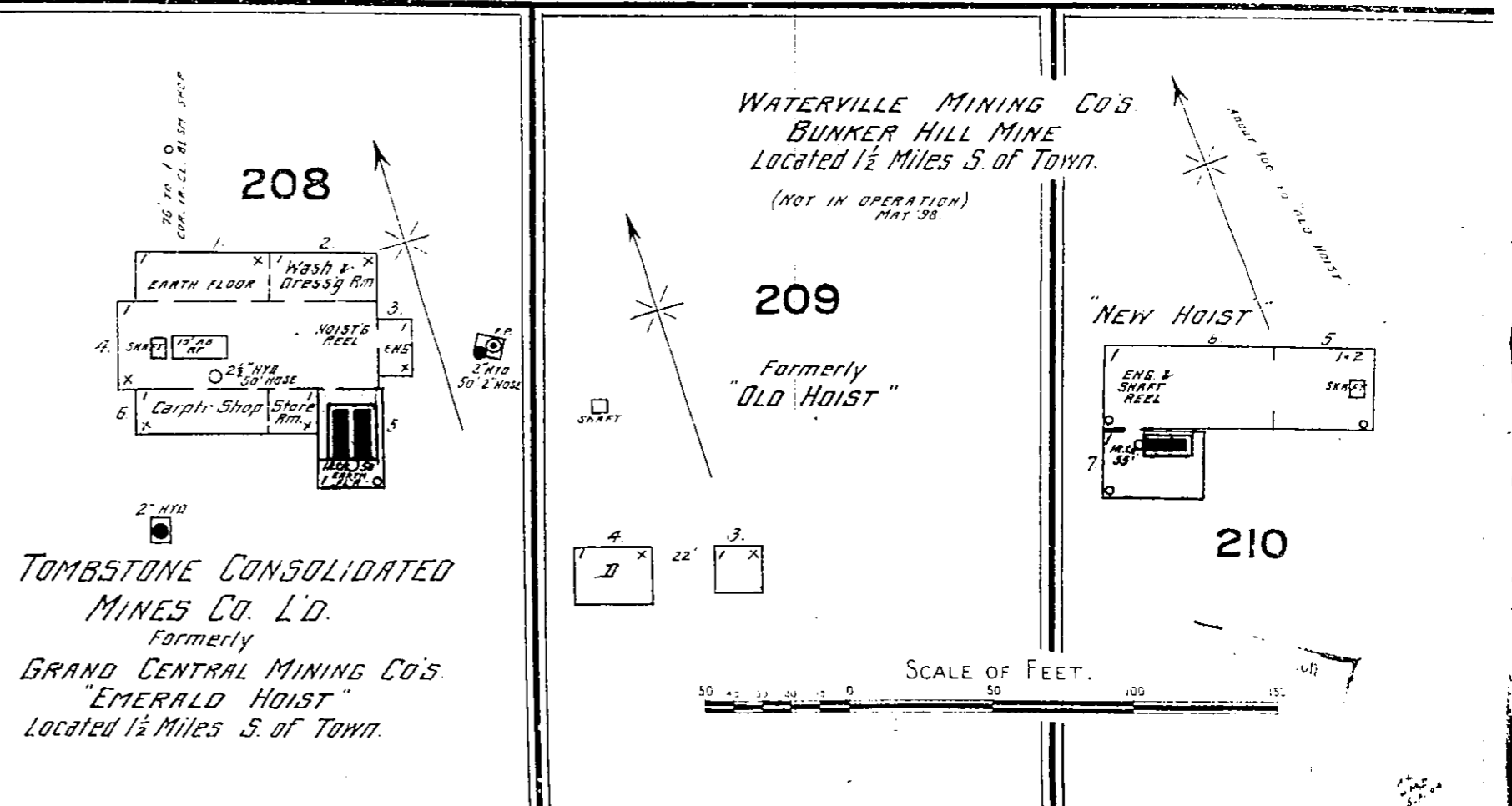


203

LUCKY CUSS HOIST  
(NOT IN OPERATION)  
Located 1 Mile S. of Town.



204



208

WATERVILLE MINING CO'S  
BUNKER HILL MINE  
Located 1 1/2 Miles S. of Town.  
(NOT IN OPERATION)  
MAY 98

209

Formerly  
"OLD HOIST"

210

TOMBSTONE CONSOLIDATED  
MINES CO. L.D.  
Formerly  
GRAND CENTRAL MINING CO'S  
"EMERALD HOIST"  
Located 1 1/2 Miles S. of Town.

SCALE OF FEET.