

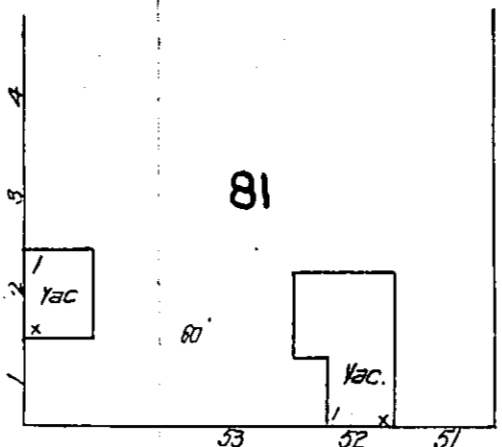
NOTE: GRAND CANYON HOTEL SUPPLIED WITH WATER FROM 2 TANKS. CAP 16200 GALLONS LOCATED IN B. 18, ELEV. 79 FT. KEY COP. OF 22 1/2 WILLIAMS AV. FILLED FROM WELL COP. 4 1/2 AT W. GIBBY AV. BY STEAM PUMP - FOUR 22 HRS.

300 FT. 2 1/2" COPPER PIPE, TOWN NIGHT WATCHMAN - LIGHTS: ELECT. & COAL OIL TOWN LEVEL. FIRE LIGHTS SHOWN BY HEAVY RED LINE ON IND.

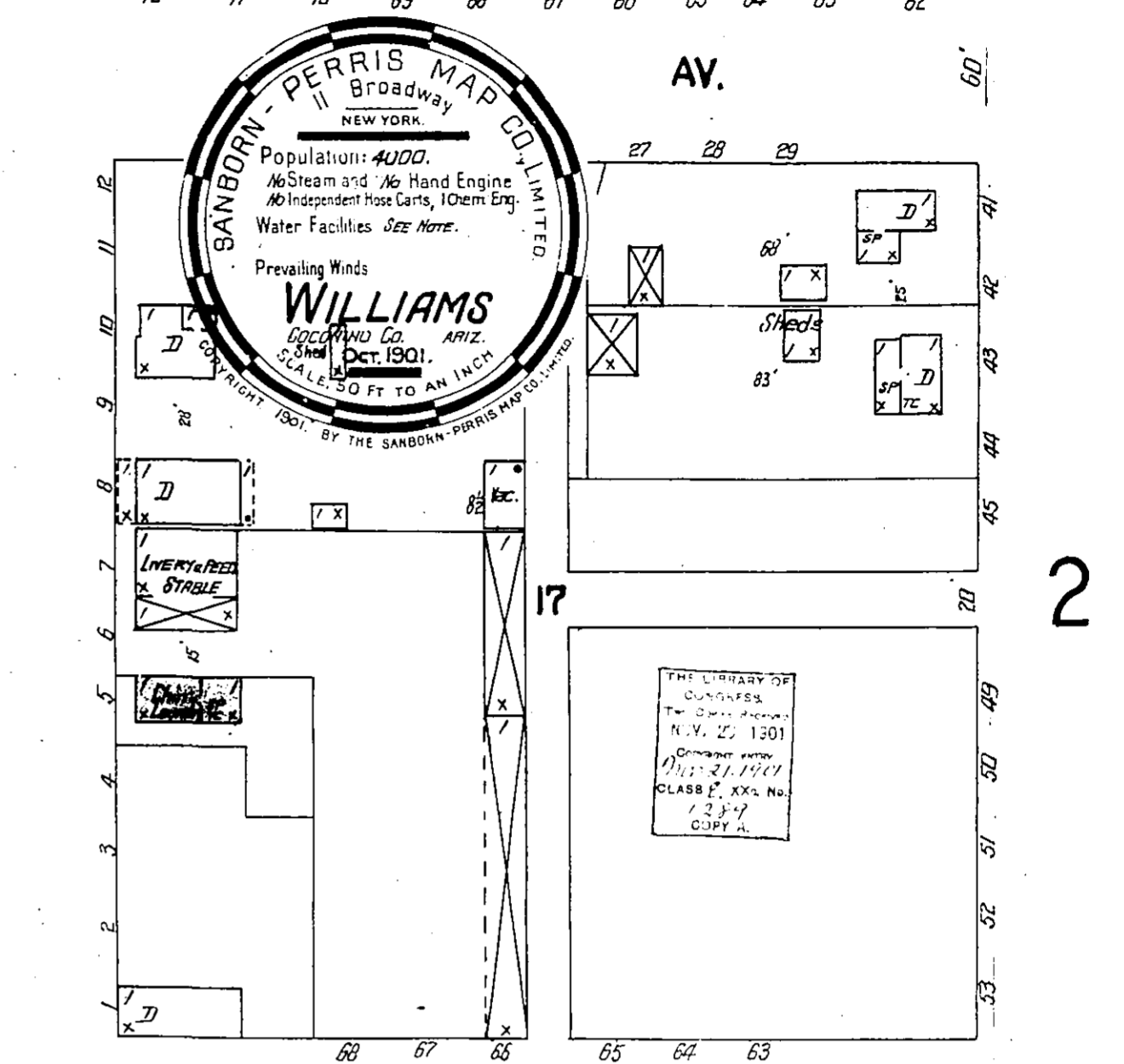
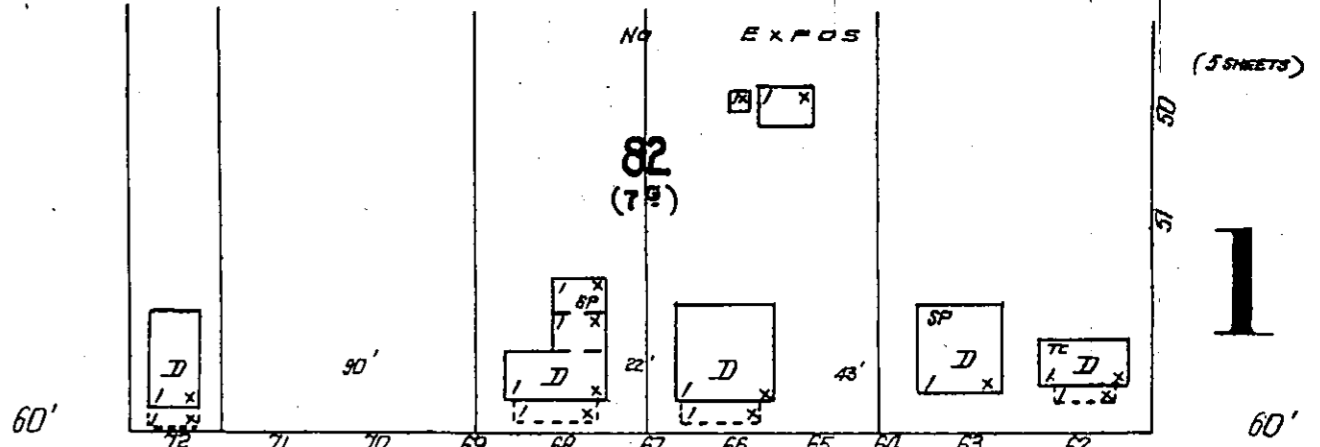
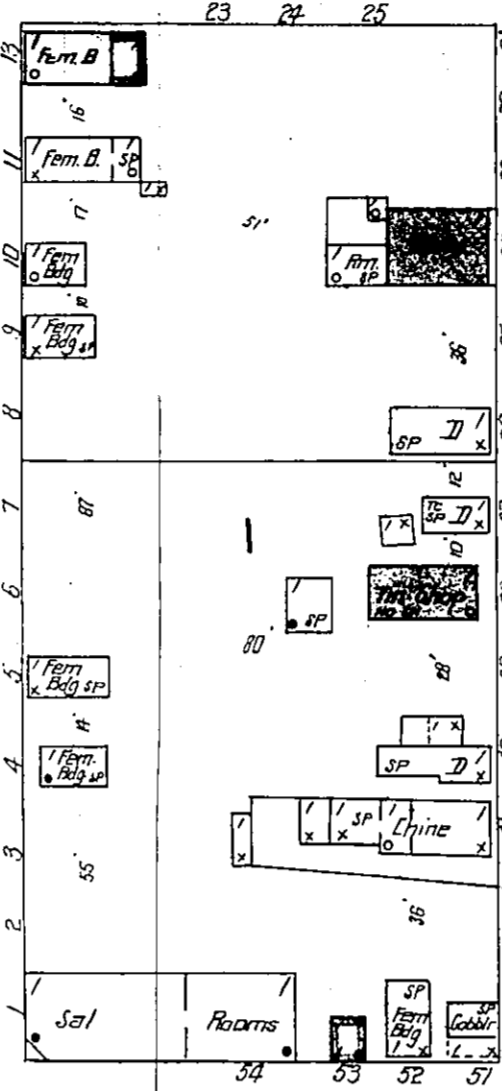
INDEX.

SPECIALS.	SHEET
E Electric Light Works, Pump House	1
G Grand Canyon Hotel	1
L Lombard Goode & Co., Smelter	3
M M. E. Church	2
P Poison Building Public School	3
R R. C. Church R. R. Section House	3
S Saginaw Lumber Co. Santa Fe Pacific R. R. Depot	5
W Williams Brewing Co., Bottling Works Electric Light and Power Co.	5

KEY	
—	FIRE WALL GIN AS ROOF
—	CONCRETE
—	FRAME PARTITION
—	OPENING & IRON DOORS
—	WINDOWS - SHUTTERS
—	STABLE
—	WINDOW IN 1 ST STORY
—	— 1 1/2" —
—	— 2 1/4" —
—	— 3 1/4" —
—	— 4 1/4" —
—	— 5 1/4" —
—	— 6 1/4" —
—	— 7 1/4" —
—	— 8 1/4" —
—	— 9 1/4" —
—	— 10 1/4" —
—	— 11 1/4" —
—	— 12 1/4" —
—	— 13 1/4" —
—	— 14 1/4" —
—	— 15 1/4" —
—	— 16 1/4" —
—	— 17 1/4" —
—	— 18 1/4" —
—	— 19 1/4" —
—	— 20 1/4" —
—	— 21 1/4" —
—	— 22 1/4" —
—	— 23 1/4" —
—	— 24 1/4" —
—	— 25 1/4" —
—	— 26 1/4" —
—	— 27 1/4" —
—	— 28 1/4" —
—	— 29 1/4" —
—	— 30 1/4" —
—	— 31 1/4" —
—	— 32 1/4" —
—	— 33 1/4" —
—	— 34 1/4" —
—	— 35 1/4" —
—	— 36 1/4" —
—	— 37 1/4" —
—	— 38 1/4" —
—	— 39 1/4" —
—	— 40 1/4" —
—	— 41 1/4" —
—	— 42 1/4" —
—	— 43 1/4" —
—	— 44 1/4" —
—	— 45 1/4" —
—	— 46 1/4" —
—	— 47 1/4" —
—	— 48 1/4" —
—	— 49 1/4" —
—	— 50 1/4" —
—	— 51 1/4" —
—	— 52 1/4" —
—	— 53 1/4" —
—	— 54 1/4" —
—	— 55 1/4" —
—	— 56 1/4" —
—	— 57 1/4" —
—	— 58 1/4" —
—	— 59 1/4" —
—	— 60 1/4" —
—	— 61 1/4" —
—	— 62 1/4" —

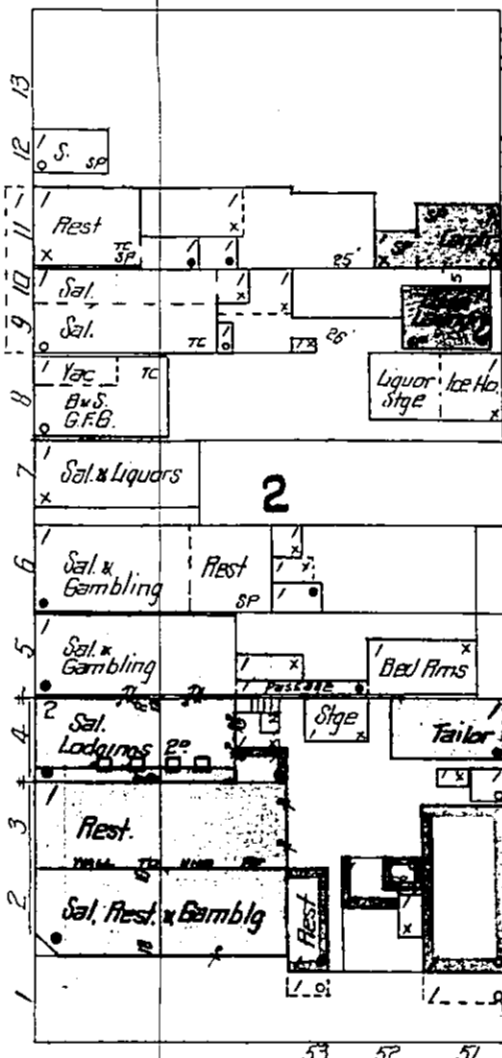


81
TABER



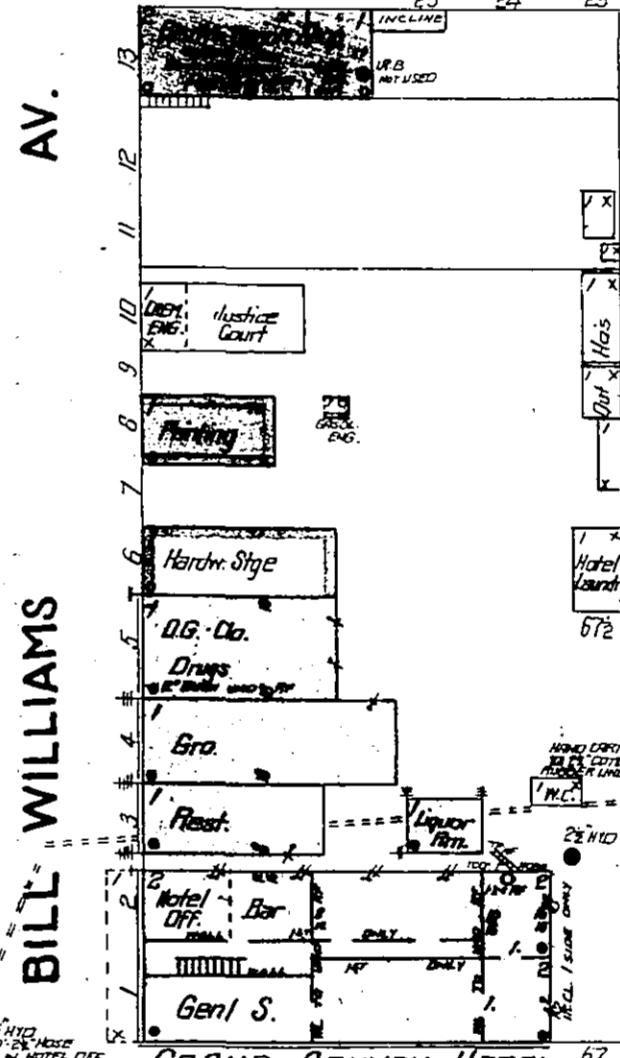
AV.

RAILROAD



AV.

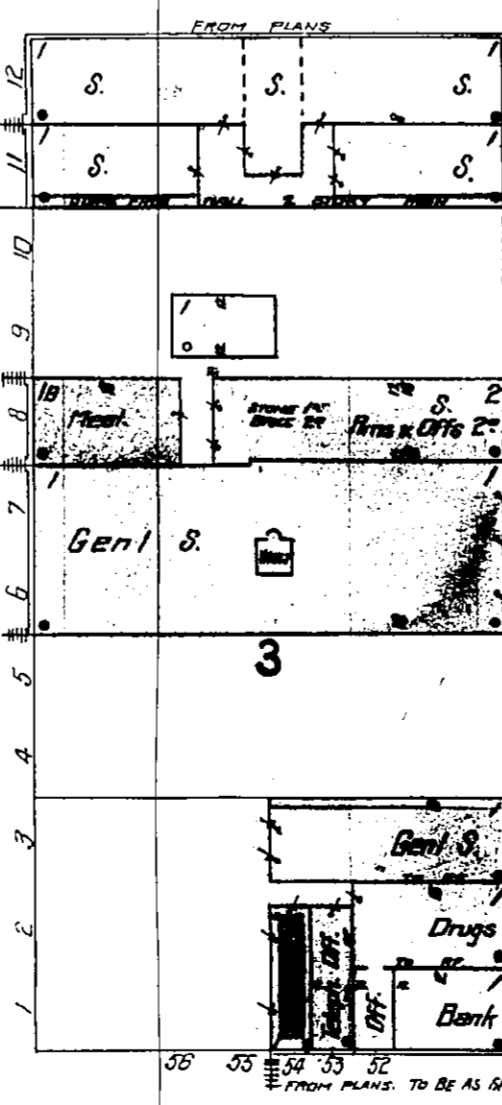
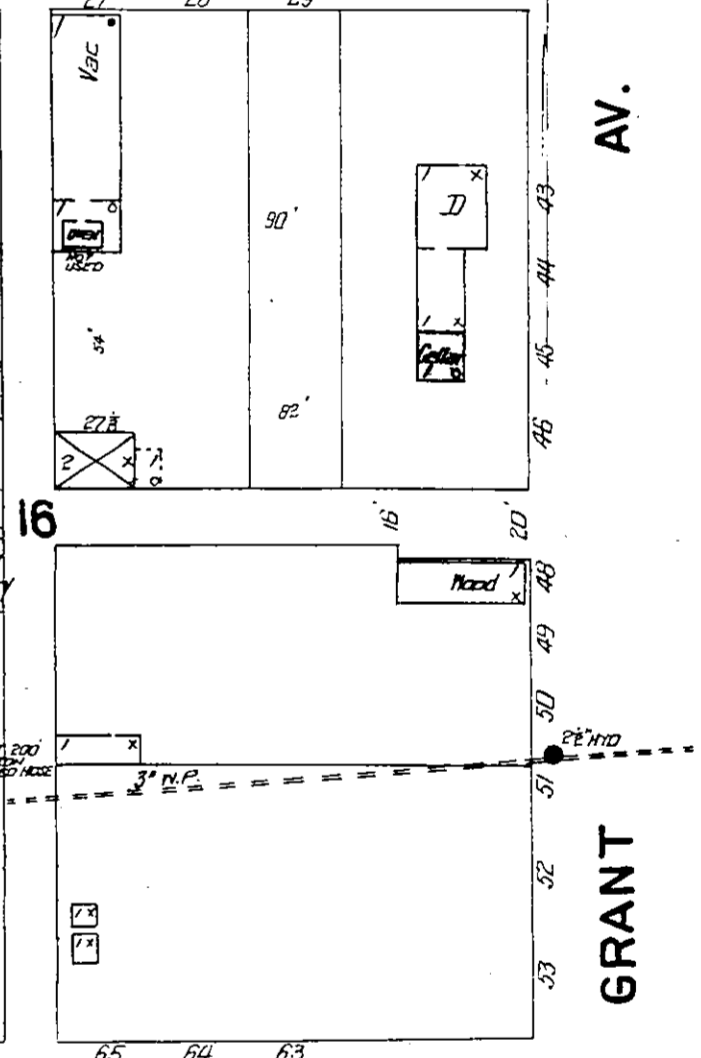
BILL WILLIAMS



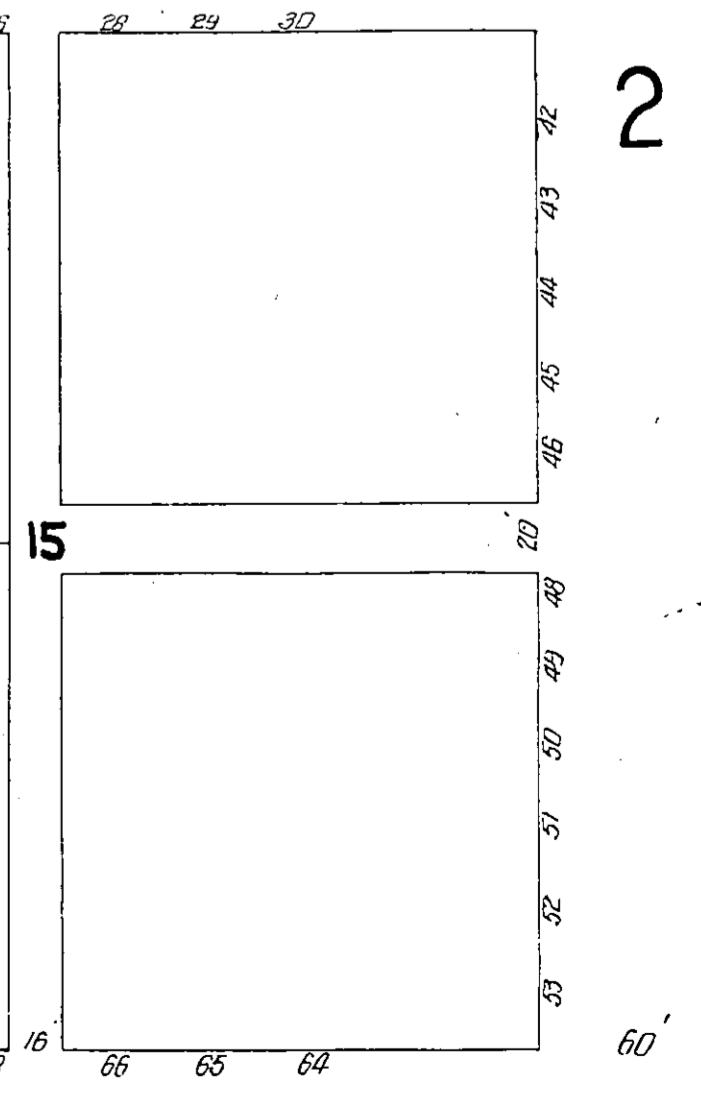
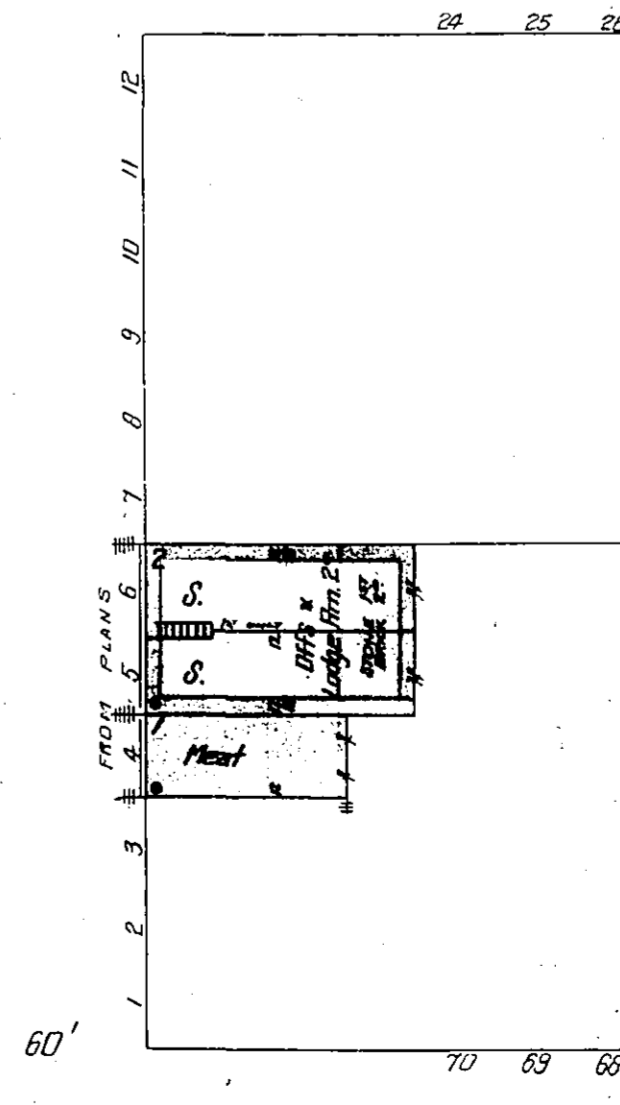
GRAND CANYON HOTEL

AV.

GRANT



3



SCALE OF FEET.

Library of Congress